



Baltimore County Public Schools

# Blueprint for Maryland's Future

Stakeholder Group

May 26, 2022

Dr. Melissa Lembo Whisted, Executive Director

Dr. Jeffrey Holmes, Senior Executive Director





# Blueprint

## Kirwan Commission Report- Policy Areas

Early Childhood  
Education

High-quality and  
Diverse Teachers  
and Leaders

College and Career  
Readiness Pathways

- including Career and  
Technical Education

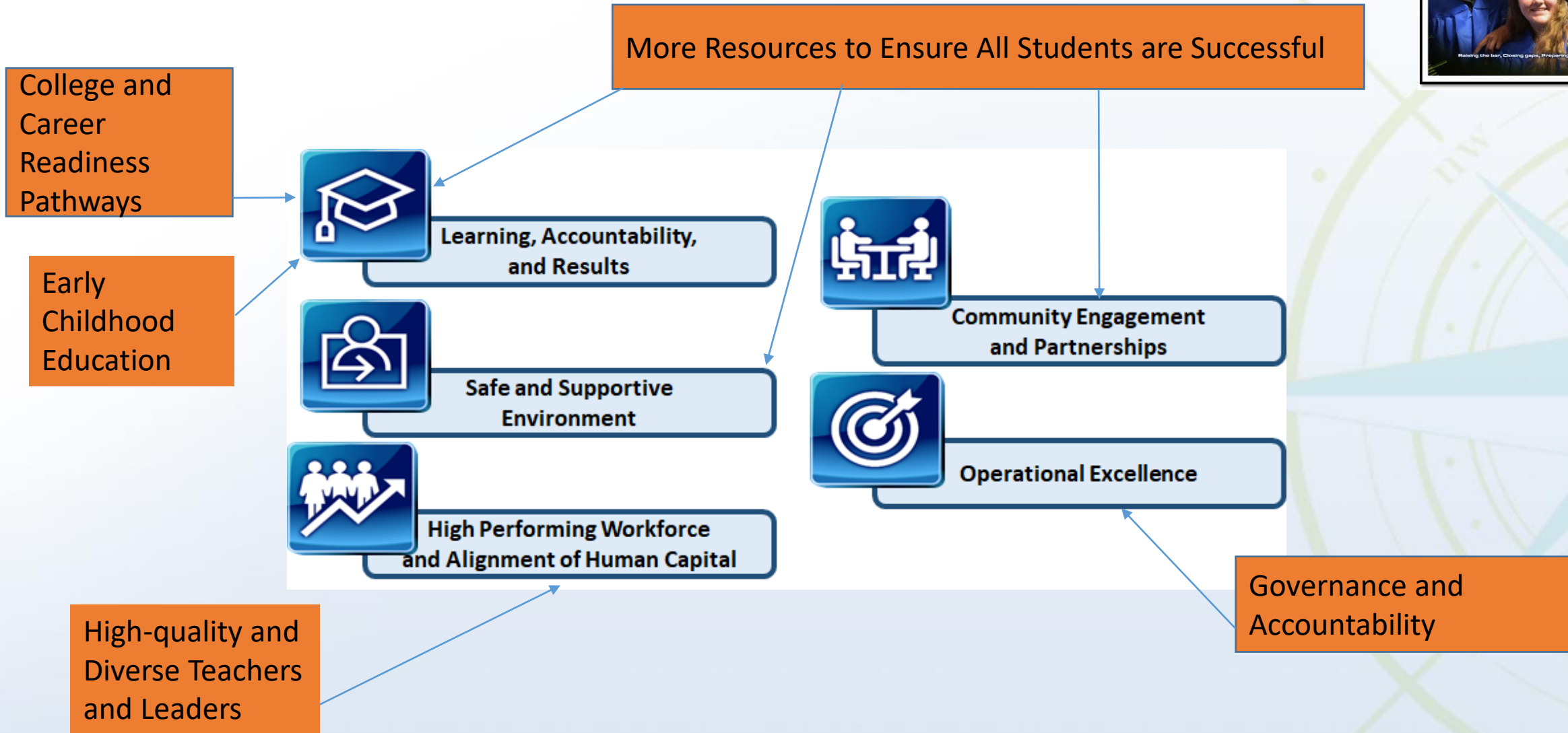
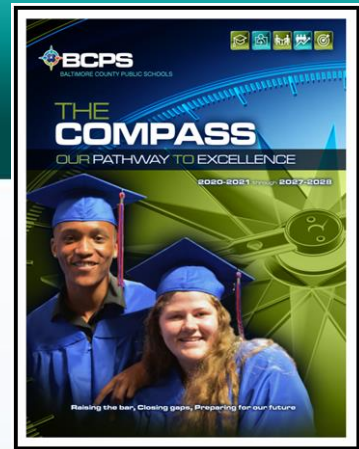
More Resources to  
Ensure All Students  
are Successful

Governance and  
Accountability



# Strategic Plan Alignment

## The Compass: Our Pathway to Excellence





# BCPS Shifts Required

Blueprint Policy Area	Current BCPS Status	Blueprint Recommendation
Early Childhood	Half Day Sessions	Full Day Sessions
High-quality and Diverse Teachers and Leaders	Negotiated step and ladder system	Nationally Board-Certified Teacher stipend of \$10,000 on July 1, 2022 Adopt Career Ladder by July 1, 2024 Minimum teacher salary of \$60,000 by July 1, 2026
College and Career Readiness Pathways	Alert students and families in grade 11	Alert students and families in grade 10



# Workgroups

BCPS  
Stakeholder

BCPS and  
County  
Government

MSDE  
Sub-Groups



# Timeline

Due	Item
July 1, 2021	Identify District Implementation Coordinator
September 1, 2021	District Plan to Train All Staff on Mental Health
November 15, 2021	Technology Spending Funds Report Due
December 1, 2021	All staff trained in behavioral health and trauma
December 1, 2021	Pre-K Reporting Report to identify eligible public and private Pre-K Providers; student participation, kindergarten readiness
December 1, 2021	Reports on use of federal and state funds used
December 1, 2021	County Health Department and Social Services must report on number of families notified of Pre-K opportunities



# Timeline

Due	Item
January 1, 2022	Report on how COVID Trauma funds were spent
January 1, 2022	District reports to the Legislative Policy Committee the Summer School Implementation Plan
June 15, 2022 (initial date)	Must submit a District Blueprint Implementation Plan to MSDE <ul style="list-style-type: none"><li>• How BCPS will implement each recommendation of the Blueprint and create a plan to address each policy area</li></ul>



# Proposed CCR Timeline

## CCR Implementation Timeline

### HB 1450 CCR Implementation Timeline







# Proposed Implementation Timeline

## Implementation Plan Timeline

### HB 1450 Implementation Plan Timeline





# Early Childhood Education

## Investing in High Quality Early Childhood Education and Care



Significant expansion of full-day pre-school and pre-kindergarten



Free for all low-income three- and four-year-olds



All children can begin kindergarten ready to learn



Classroom aid to have credentials, such as an Associates of Arts degree



# Teachers and Leaders

## Elevating Teacher and School Leaders



Raise the standards and status of the teaching profession



Make career- teaching desirable and keep those who want to keep teaching in the classroom



Create career ladders that incentivizes teachers to stay in the classroom positions



Nationally Board Certified teacher salary increase



# College & Career Readiness/CTE

## Creating a World Class Instructional System



An internationally benchmarked curriculum that enables most students to achieve “college- and career-ready” status by the end of tenth grade



Pursue pathways that include early college, Advanced Placement courses, and/or a rigorous technical education leading to industry-recognized credentials and high-paying jobs

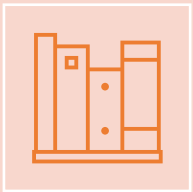


Heavy emphasis on CTE preparation, specifically Youth Apprenticeship

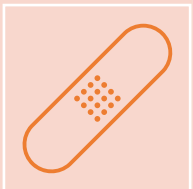


# More Resources for High Needs Students

## Providing More Supports to Students Who Need it Most



Broad and sustained new supports for schools serving high concentrations of students living in poverty



Creates grant program for high-poverty schools to provide wraparound services for families



# Community Schools

<b>Cohort A</b> <b>School Year 2019 – 2020</b> <b>4 Schools</b>	<b>Cohort B</b> <b>School Year 2020 – 2021</b> <b>10 Schools</b>	<b>Cohort C</b> <b>School Year 2021 – 2022</b> <b>22 Schools</b>	<b>Cohort D</b> <b>School Year 2022-2023</b> <b>16 Schools</b>
<ol style="list-style-type: none"><li>1. Deep Creek ES</li><li>2. Hawthorne ES</li><li>3. Riverview ES*</li><li>4. Sandalwood ES</li></ol>	<p>All Year 1 schools and:</p> <ol style="list-style-type: none"><li>5. Baltimore Highlands ES</li><li>6. Colgate ES</li><li>7. Halstead ES</li><li>8. Logan ES</li><li>9. Martin Blvd ES</li><li>10. Shady Spring ES</li></ol>	<p>All Year 1 &amp; 2 schools and:</p> <ol style="list-style-type: none"><li>11. Bedford ES</li><li>12. Berkshire ES</li><li>13. Chadwick ES</li><li>14. Dundalk ES</li><li>15. Mars Estates ES</li><li>16. Middlesex ES</li><li>17. Norwood ES</li><li>18. Padonia ES</li><li>19. Rosedale Center</li><li>20. Sandy Plains ES</li><li>21. Sussex ES</li><li>22. Woodlawn MS</li></ol>	<p>All Year 1, 2, &amp; 3 schools and:</p> <ol style="list-style-type: none"><li>23. Battle Grove ES</li><li>24. Deep Creek MS</li><li>25. Dundalk MS</li><li>26. Edmonson Heights ES</li><li>27. Featherbed Lane ES</li><li>28. General John Stricker MS</li><li>29. Halethorpe ES</li><li>30. Holabird MS</li><li>31. Johnnycake ES</li><li>32. Lansdowne ES</li><li>33. Lansdowne MS</li><li>34. McCormick ES</li><li>35. Milbrook ES</li><li>36. Scotts Branch ES</li><li>37. Victory Villa ES</li><li>38. Winfield ES</li></ol>



# Community Schools – By Zone

West 13 Schools	Central 3 Schools	East 22 Schools	
Baltimore Highlands ES Bedford ES Chadwick ES Edmonson Heights ES Featherbed Lane ES Halethorpe ES Johnnycake ES Lansdowne ES Riverview ES Scotts Branch ES Winfield ES  Lansdowne MS Woodlawn MS	Halstead ES Milbrook ES Padonia ES	Battle Grove ES Berkshire ES Colgate ES Deep Creek ES Dundalk ES Hawthorne ES Logan ES Mars Estates ES Martin Blvd ES McCormick ES Middlesex ES Norwood ES Sandalwood ES Sandy Plains ES Shady Spring ES Sussex ES Victory Villa ES	Deep Creek MS Dundalk MS General John Stricker MS Holabird MS  Rosedale Center



# Accountability

## Ensuring Excellence for All



An accountability-oversight board that has the authority to ensure that the Commission's recommendations are successfully implemented and produce the desired results



Accountability and Implementation Board (AIB)





# Discussion

- Comments on Blueprint for Maryland's Future
- Review of Statute
- Review of chart for stakeholder input





# Stakeholder Input- Full Day Prekindergarten



## Maryland State Prekindergarten Program Requirements

	Prekindergarten Expansion Grants Program	Maryland State PreK Program	
	FY 2022-2025 Prekindergarten Expansion Grant Program Requirements	FY 2023-2025 Transitional Program Requirements	FY 2026-2030 Blueprint Structural Elements
Teacher Qualifications	Certified Teacher (P-3 Certification) or Teachers with a Bachelor's Degree and enrolled in an approved alternative certification program	Certified Teacher (P-3 Certification)	Certified Teacher (P-3 Certification) or Teachers with a Bachelor's Degree and enrolled in an approved alternative certification program
Assistant Teacher Qualifications	Assistant Teacher with CDA or an <u>Associates</u> Degree	Assistant Teacher with a High School Diploma (minimum)	Assistant Teacher with CDA or an <u>Associates</u> Degree
Ratio	10:1	10:1	10:1
Class Size	Maximum 20	Average 20	Maximum 20
Maryland EXCELS Requirement  *Note: Level 5 means the program is accredited.	1 <sup>st</sup> Priority for funding: Published at Level 5 or 4 with a plan to publish at Level 5 by end of the grant period  2 <sup>nd</sup> Priority if funds available: Private Provider Published at Level 3 with a plan in place to achieve Level 5 in 5 years. Public Provider published at Level 4 with a plan in place to publish at Level 5 in 5 years.	No Maryland EXCELS Requirement	Private Provider Published at Level 3 with a plan in place to achieve Level 5 in 5 years. Public Provider published at Level 4 with a plan in place to publish at Level 5 in 5 years.
Program Type	Full-day (6.5 hours)	Full-day (6.5 hours)	Full-day (6.5 hours)
Program Length	180-days	180-days	180-days
Income Eligibility	3- and 4-year olds up to 300 percent of FPL; homeless and students with IEPs are eligible regardless of income	3- and 4-year olds up to 300 percent of FPL (Tier I)	3- and 4-year olds up to 300 percent of FPL (Tier I) and 4-year-olds between 300 - 600 percent FPL (Tier II)
Per student funding amount	<b>\$13,000 per student</b> for new, full-day slots. <b>\$6,500 per student</b> to improve a slot from half-day to full-day.  Public and private providers are both eligible.	<b>Rate per full-day student</b> FY 23 - \$10,094 FY 24 - \$11,594 FY 25 - \$13,003  Public and private providers are both eligible.	<b>FY 26 \$14,473 per full-day student</b> FY 27 \$15,598 FY 28 \$16,811 FY 29 \$18,118 FY 30 \$19,526  Public and private providers are both eligible.



# Stakeholder Input- Full Day Prekindergarten

- **Preschool and Prekindergarten Expansion: A 5-YEAR STRATEGIC PLAN**

**Purpose:** Create a multi-year plan for expansion of Preschool and Prekindergarten programs in order to build full day programs in all Baltimore County Public School buildings over time in alignment to the requirements of the *Blueprint for Maryland's Future*:

- Expansion of full day prekindergarten will first be focused on making full day prekindergarten available for all four year olds from low income families as half day slots are being converted into full day slots and new slots are coming online. This will occur at the same time as full day prekindergarten is expanded gradually for three year olds from low income families.

**Alignment to The Compass: Our Pathway to Excellence:**

- Focus Area 1: Learning, Accountability, and Results
- Focus Area 2: Safe and Supportive Environments
- Focus Area 4: Community Engagement and Partnerships



# Current Full Day Sites

School	current sessions	FY22 Poverty %	FY23 Poverty %
Halstead- Central	2 full day	94.73%	99.00%
Hawthorne- East	5 full day	100.00%	112.86%
Maiden Choice- West	1 full day	75.08%	70.70%
Sandy Plains- East	2 full day	99.18%	93.39%
White Oak- Central	1 full day	81.07%	78.49%



# Recommended for 2022-2023

School	Current Sessions	2022-2023 Sessions	FY22 Poverty %	FY23 Poverty %
Berkshire - East	2 half day	2 full day	90.78%	88.60%
Lansdowne - West	3 half day	3 full day	77.94%	77.88%
Rossville - East	-	1 full day	-	-



# College and Career Readiness

## Blueprint for Maryland's Future Establishes Post College and Career Readiness Pathways



Beginning in the 2023-2024 school year, school systems shall provide all students who meet College and Career Ready Standards access to the following post college and career readiness pathways at no cost to students

Competitive Entry College Preparatory Programs	Early College or Dual Enrollment Programs	Career and Technical Education Programs
<ul style="list-style-type: none"><li>• The International Baccalaureate (IB) Diploma Program,</li><li>• The Cambridge AICE Diploma Program, or</li><li>• A comparable program consisting of Advanced Placement courses</li></ul>	<p>Students can earn</p> <ul style="list-style-type: none"><li>• An associate degree or</li><li>• At least 60 credits toward a bachelor's degree</li></ul>	<ul style="list-style-type: none"><li>• A credit or noncredit certificate or license program, course, or sequence of courses that leads to an industry recognized occupational credential or postsecondary certificate</li><li>• A registered or youth apprenticeship program</li></ul>



# Proposed Activities

- Expansion of Dual Enrollment
  - Unlimited courses, CCBC requirements only, any semester
- Advanced Placement Examination Opportunities
  - Offering one examination at no cost
- Eliminating Barriers for Youth Apprenticeship
  - Offering salary and transportation



# Stakeholder Input

## Nationally Board-Certified Teachers

- BCPS Nationally Board Certification communication
- MSDE Nationally Board Certification Memo
- Verification of Eligible Staff





# Next Steps

Scheduled from 3 to 5 p.m. virtually

- Thursday, November 3, 2022
- Thursday, February 2, 2023
- Thursday, May 4, 2023
- Advisory Committee Application





# Thank You



## **Baltimore County Public Schools**

*Raising the bar, Closing gaps, Preparing for our future*